



Kingswood Court

, Surbiton, KT5 8FE

Prices from £143,000



South Place is a collection of one, two & three-bedroom, Shared Ownership apartments located in Surbiton available to reserve now.

There are 13 one-bedroom apartments at South Place and 3 are of this layout:

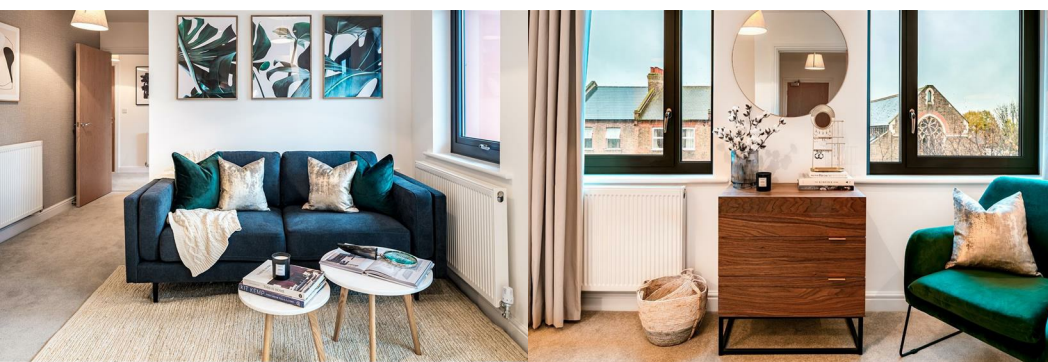
Plot 1.C.04 is located on the first floor, is 56m²/602ft² and comprises open-plan living, a great-sized bedroom, bathroom, ample storage, and a private terrace. This property is not available with parking.

Full Market Value: £357,500

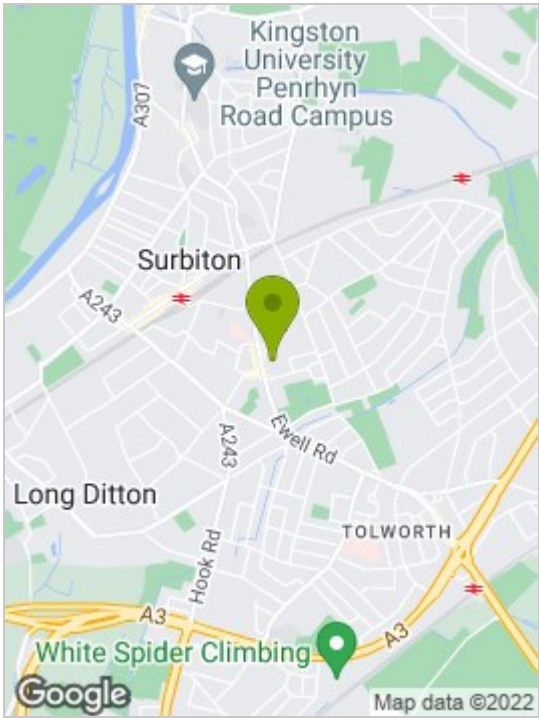
Share price from 40%: £143,000

Rent*: £492 per month

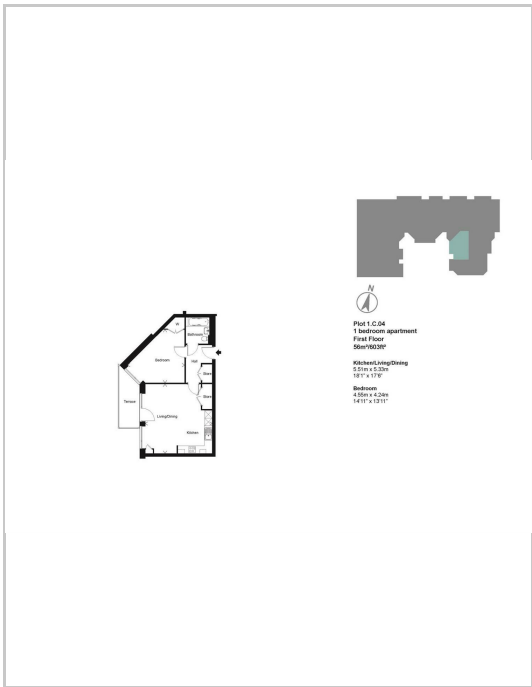
*Calculated at 2.75% per annum of the value of the share that you do not initially buy.



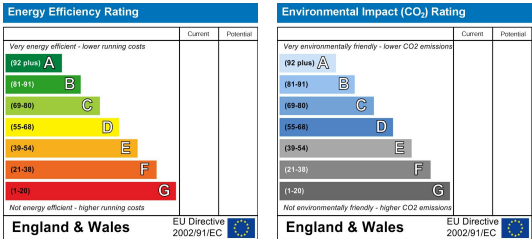
Area Map



Floor Plans



Energy Efficiency Graph



These particulars, whilst believed to be accurate are set out as a general outline only for guidance and do not constitute any part of an offer or contract. Intending purchasers should not rely on them as statements of representation of fact, but must satisfy themselves by inspection or otherwise as to their accuracy. No person in this firms employment has the authority to make or give any representation or warranty in respect of the property.